

TREES OF WILSON

Wilson's Family Heritage

Chronicles of the
Wilson County Genealogical Society



March 2022

Volume 31 Number 3

HOWARD FAMILY CEMETERY SURVEYED IN TAYLORS TOWNSHIP

James A. Bailey and Margaret B. Bailey

The Howard Family Cemetery, sometimes referred to as the Lucas-Howard Cemetery, an African-American cemetery, located in Taylors Township, Wilson County, was surveyed November 2013, in search of Frances Lyles "Yank" Finch's gravesite.

The only clue at the time was her nickname, "Yank," and that she died in Wilson or Nash County between 1956 and 1959. Her paternal, maternal and married names were unknown. In re-searching Wilson and Nash County death certificates, Mrs. Finch's death certificate was located as a result of the informant's name listed on her death certificate.

Once Mrs. Finch's Nash County death certificate was found, it revealed her burial location. A relative, Lois Blackwell Washington, was located, and she provided information about the location of the cemetery. Mrs. Washington and other relatives periodically volunteered to maintain the cemetery.

A grave marker was not located for Mrs. Finch in the cemetery. The only known photograph of her was taken in the mid-1950s.

The Howard Family Cemetery is .27 acres in size and located in Taylors Township, Wilson County, on private property. The cemetery is approximately one mile north from the intersection of Lamm Road and Highway 264 in a wooded area behind the residence at 6089 Lamm Road. Although the cemetery is overgrown with vegetation, there are several grave markers in the cemetery.



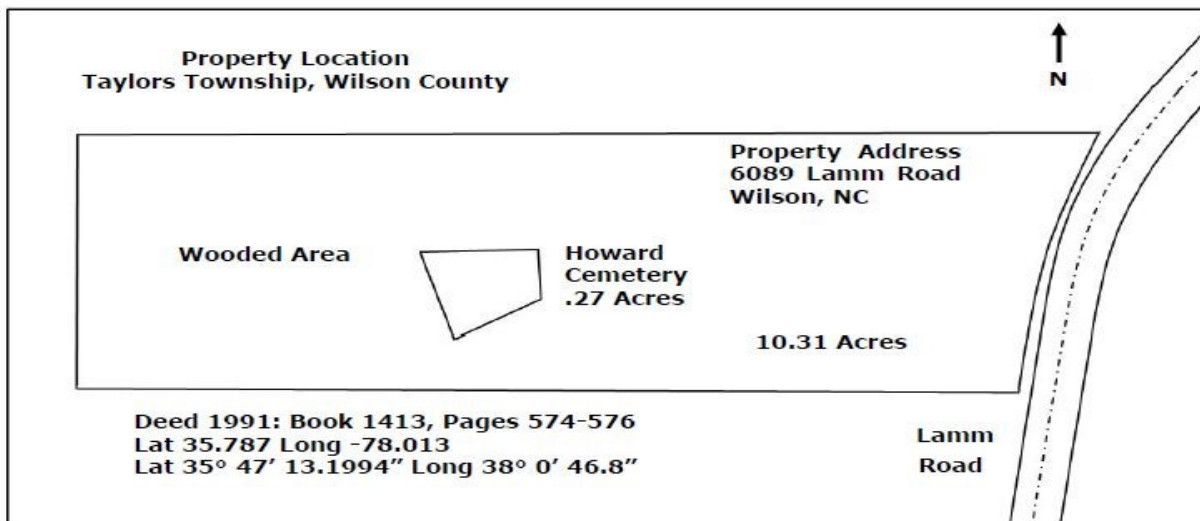
Frances Lyles "Yank" Finch and Child

Two of the burials in the Howard Family Cemetery were veterans. Albert Howard served during World War I in the 325th Service Battalion, Quartermaster Corp. Ned Rutherford served during World War II with the following distinctions: American Theater Award, World War II Victory Medal, Asiatic and Pacific Service Medals.

41 Burials

Blackmon, Ivey (Unknown)
Blackmon, John (Unknown)
Blackwell, Asbury (July 20, 1896 – February 13, 1967)
Blackwell, Buddie (Unknown)
Blackwell, Gladys (February 9, 1931 - October 27, 1961)
Blackwell, Margaret (September 11, 1889 – December 7, 1961)
Blackwell, Roy (May 16, 1912 – January 17, 1983)
Blackwell, Sally Ann (October 17, 1882 – June 10, 1920)
Brown, Mollie Brantley Howard (April 15, 1878 – January 1, 1974)
Coleman, Beadie Lyles Howard (June 20, 1910 - April 12, 1955)
Eatman, Ida (Abt. 1882 – December 17, 1956)
Eatman, Sallie (Abt. 1881 - July 27, 1961)
Eatmon, Clifton (January 29, 1924 – March 12, 1980)
Felder, Frances Strickland (March 8, 1921 - April 4, 1975)

Finch, Frances Lyles (April 3, 1886 – September 11, 1958)
 Graham, Twillie "Twittie" [Quillie] Ann Ward (January 13, 1944 – October 2, 1965)
 Howard, Albert (May 16, 1892 - August 3, 1956)
 Howard, Alvin (March 15, 1903 - August 15, 1974)
 Howard, Beatrice (April 1, 1932 – December 3, 1949)
 Howard, Gilbert (Abt. 1868 – July 17, 1943)
 Howard, Herman (January 27, 1897 – January 31, 1958)
 Howard, Herman Earl (September 15, 1958 - August 6, 1959)
 Howard, Johnnie (March 15, 1885 – February 17, 1952)
 Howard, Lula (November 23, 1883 – May 27, 1959)
 Howard, Nettie M. (Abt. 1957 - June 16, 1962) Died in Neptune, NJ
 Howard, Oscar (February 14, 1886 – November 26, 1957)
 Howard, Thomas Jefferson (December 31, 1893 – May 22, 1972)
 Liles, Jernie (Abt. 1911 - October 21, 1960)
 Little, Tincy Lyles (August 2, 1903 – February 20, 1970)
 Lucas, Etta (January 1, 1897 – August 31, 1960)
 Lucas, Hattie "Pete" Blackman (October 23, 1913 – December 30, 1982)
 Lucas, Rassie (July 4, 1905 – May 15, 1956)
 Rowe, David (September 6, 1877 - July 4, 1953)
 Rowe, Pitie "Piety" (April 18, 1894 – November 10, 1941)
 Rowe, Ruffin Heywood (November 9, 1879 - July 7, 1944)
 Rutherford, Ned (Unknown – October 23, 1964) (WWII Veteran, American Theater Award, Asiatic and Pacific Service medals and World War II Victory Medal)
 Smith, Nettie Woodard (November 26, 1902 – February 1983)
 Smith, Sr., Jim (Unknown - July 12, 1980)
 Strickland, Betsie (May 12, 1904 – March 13, 1957)
 Strickland, Roosevelt (March 3, 1933 – March 5, 1959)
 Ward, Johnny (February 24, 1920 – January 15, 1957)



Sources

1. Anne Melvin, Nash County Register of Deeds, Nashville, NC, Death Certificates, passim, 2013.
2. Audrey Neal, Wilson County Register of Deeds, Wilson, NC, Death Certificates, passim, 2013.
3. Personal Interview, Lois Blackwell Washington, 11370 Simms Rd., Bailey, NC, 2013.
4. Personal Interview, Margaret Davis Taylor, 4430 Rosebud Church Rd., Wilson, NC, 2013.
5. Personal Interview, Sidney and Anna Harmon, 6089 Lamm Rd., Wilson, NC, 5 November 2013.
6. *Wilson Daily Times*, Obituaries, passim, Wilson, NC.
7. *Rocky Mount Telegram*, Obituaries, passim, Rocky Mount, NC.